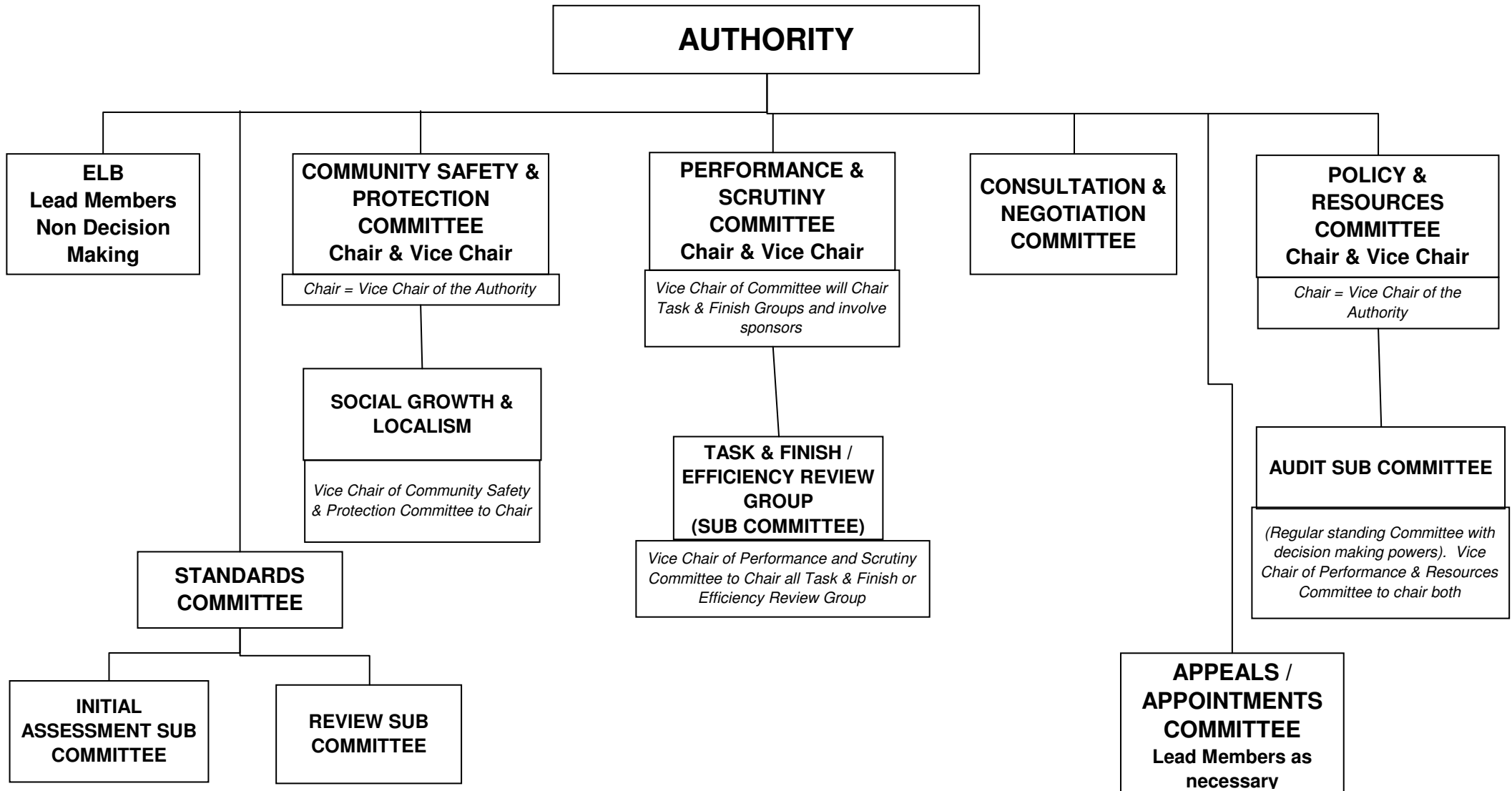


Merseyside Fire & Rescue Authority



APPENDIX B

<u>Area</u>	<u>Scrutiny Member</u>	<u>Scrutiny Support Officer</u>
<i>Operational Preparedness</i>		AM Chris Howard – Director of Operational Preparedness
<i>Operational Response</i>		AM Dave Mottram – Director of Operational Response
<i>Prevention and Protection</i>		AM Myles Platt – Director of Prevention & Protection
<i>Environment, Health & Safety</i>		GM John McNeil – Health And Safety Manager
<i>Equality and Diversity</i>		Ustar Miah – Equality & Diversity Manager

Merseyside Fire & Rescue Authority
COMMITTEE MEMBERSHIP 2012/13

Chair of Authority: Cllr.
Vice-Chair of Authority: Cllr.
Vice-Chair of Authority: Cllr.

Labour Group Leader: Cllr.
 Liberal Democratic Group Leader: Cllr.
 Conservative Group Leader: Cllr.

Committee	Members	Alternate Members
Executive Leadership Board (3,1,1) Made up of the Chair, Vice Chairs and Group Leaders	1(Chair) Labour 2 Labour 3 Labour 4 Conservative 5 Lib Dem	Not Applicable
Community Safety & Protection Committee 8 Members (7,1/1)	1(Chair) Labour 2 Labour 3 Labour 4 Labour 5 Labour 6 Labour 7 Labour 8 Lib Dem or Conservative	1 (Vice-Chair) Labour (Chair of Social Growth & Localism Sub Committee) 2 Labour 3 Labour 4 Labour 5 Labour 6 Labour 7 Labour 8 Lib Dem or Conservative
Consultation and Negotiation Committee 5 Members (4,1/1)	1(Chair) Labour 2 Labour 3 Labour 4 Labour 5 Lib Dem or Conservative	1 Labour 2 Labour 3 Labour 4 Labour 5 Lib Dem or Conservative

<p>Policy & Resources Committee</p> <p>8 Members (7,1/1)</p>	<p>1(Chair) Labour</p> <p>2 Labour 3 Labour 4 Labour 5 Labour 6 Labour 7 Labour 8 Lib Dem or Conservative</p>	<p>1 (Vice-Chair) Labour (Chair of Audit Sub Committee)</p> <p>2 Labour 3 Labour 4 Labour 5 Labour 6 Labour 7 Labour 8 Lib Dem or Conservative</p>
<p>Audit Sub Committee sub c'ttee to Policy & Resources Committee</p> <p>5 Members (4,1/1)</p>	<p>1(Chair) Labour</p> <p>2 Labour 3 Labour 4 Labour 5 Lib Dem or Conservative</p>	<p>1 Labour 2 Labour 3 Labour 4 Labour 5 Lib Dem or Conservative</p>
<p>Social Growth & Localism Sub Committee sub c'ttee to Community Safety & Protection Committee</p> <p>5 Members (4,1/1)</p>	<p>1(Chair) Labour</p> <p>2 Labour 3 Labour 4 Labour 5 Lib Dem or Conservative</p>	<p>1 Labour 2 Labour 3 Labour 4 Labour 5 Lib Dem or Conservative</p>
<p>Performance & Scrutiny Committee</p> <p>6 Members (5,1/1)</p>	<p>1(Chair) Labour</p> <p>2 Scrutiny Member for Operational Preparedness 3 Scrutiny Member for Operational Response 4 Scrutiny Member for Prevention and Protection 5 Scrutiny Member for Environment, Health & Safety 6 Scrutiny Member for Equality & Diversity</p>	<p>1 (Vice-Chair) Labour (Chair of Task & Finish And Efficiency Review Group)</p> <p>2 3 4 5 6</p>
<p>Task & Finish And Efficiency Review Group</p> <p>Members as required</p>	<p>1 (Chair) Labour (Vice-Chair of Performance & Scrutiny Committee)</p> <p><i>Other Membership dependent upon topic</i></p>	

Appointments Committee (3,1,1) Made up of the Chair, Vice Chairs and Party Leaders	1(Chair) Labour 2 Labour 3 Labour 4 Conservative 5 LibDem	1 Labour 2 Labour 3 Labour 4 Conservative 5 LibDem
Appeals Committee (3,1,1) Made up of the Chair, Vice Chairs and Party Leaders	1(Chair) Labour 2 Labour 3 Labour 4 Conservative 5 LibDem	1 Labour 2 Labour 3 Labour 4 Conservative 5 LibDem
Member Development Group (2,1,1)	1 Labour 2 Labour 3 Conservative 4 Lib Dem	1 Labour 2 Labour 3 Conservative 4 Lib Dem
Standards Committee 7 Members (2,1,1 and 3 Independent Members)	1 (Ind. Member) 2 (Ind. Member) 3 (Ind. Member) 4 Labour 5 Labour 6 Conservative 7 Lib Dem	1 n/a 2 n/a 3 n/a 4 Labour 5 Labour 6 Conservative 7 Lib Dem
Initial Assessment Sub-Committee (1,1,1 and 1 Ind.Member)	1 (Ind. Member) 2 TBC 3 TBC 4 TBC	1 2 TBC 3 TBC 4 TBC
Review of Initial Assessment Sub-Committee (1,1,1 and 1 Ind.Member)	1 (Ind.Member) 2 TBC 3 TBC 4 TBC	1 2 TBC 3 TBC 4 TBC